

KWA MARITANE BUSH LODGE

FACTSHEET

GENERAL LODGE INFORMATION

Beautifully located on the slopes of an ancient volcano, Kwa Maritane Bush Lodge, meaning “Place of the Rock”, is a hub of luxury in the heart of an untamed wilderness - the malaria-free Pilanesberg National Park.

ACCOMMODATION

18 Standard Family Rooms

All Family Rooms have 2 double beds and a sleeper couch.

20 Executive Twin Rooms

The Executive Studio rooms have 2 double beds and mini-bar.

16 Standard Upstairs and Downstairs Rooms

All Standard Upstairs and Downstairs Rooms have 1 King Bed

20 Executive King Rooms

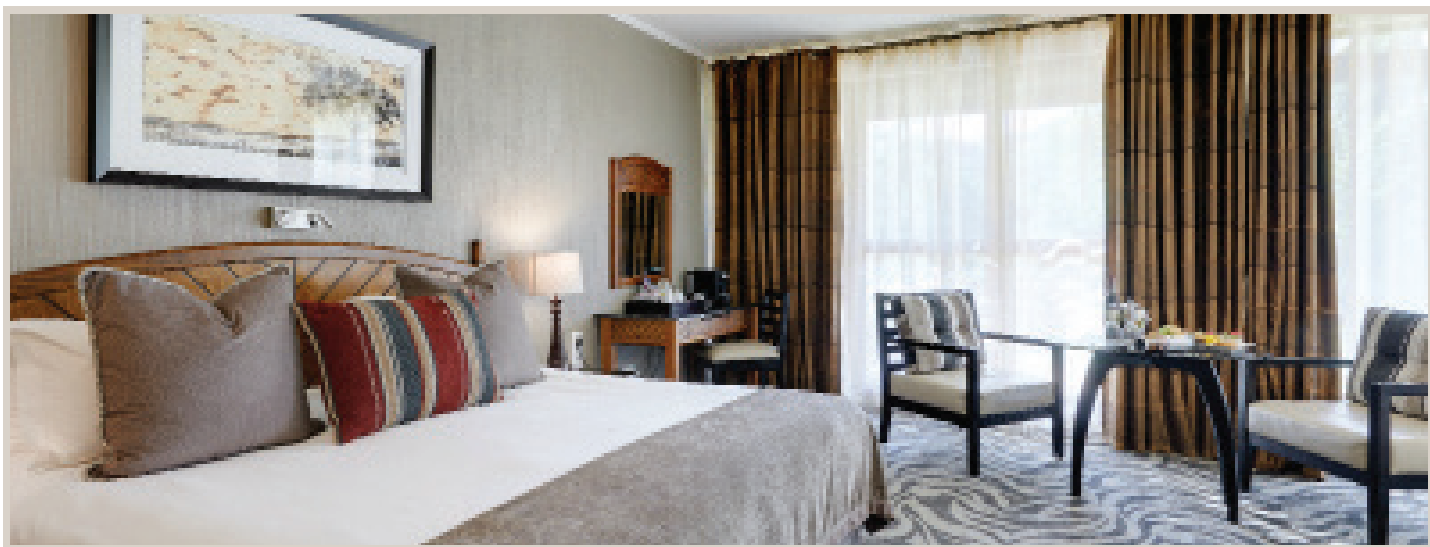
The Executive King rooms have 1 king bed

16 Twin Rooms

All Twin Rooms have 2 single beds.

AMENITIES AND SERVICES

- Room service: 10h00 - 22h00
- Complimentary Capped Wi-Fi
- Cots
- Parking facilities - Covered parking



DINING AND BARS

Boma

Capture the spirit of Africa with a bush dinner at our Boma situated in the park. Offering undercover seating for up to 240 people.

A variety of theme evenings available on request.

Boma: 180 - 200 pax

Kwa Mazout Bar and Lounge

Open 10h00 'til 00h00

Lefakeng Restaurant

Breakfast 07h00 - 10h00

Buffet Dinner 18h30 - 22h00
Carvery/Buffer

LOCAL TOURS AND ACTIVITIES

Game drive departure times vary dependant on the season together with Park Entry Gate opening times

1. Morning Drive – 3 hours duration, early departure in summer, returning in time for a late breakfast. Departs at 08h00 during the Winter months.
2. Afternoon Drive – 3 hours duration with a stop in the reserve for sundowners. Game is viewed by spotlight on the return journey.

3. Game Drive / Bush Braai – Following a normal afternoon drive, guests are taken directly to our Bush Boma in the Park where they will enjoy a traditional dinner under the stars before returning to the Lodge.

4. Game Walk – Guided walks within the Park accompanied by an armed Field Guide.

5. Wildlife Centre – This is a small little museum and centre where you can see some snakes in enclosures and we also have displays of some animal skulls and droppings. You can make your bookings for the game activities at this centre as well.

6. Tree, Bird & Nature walks are conducted within the Lodge grounds.

7. Star Gazing evenings – Held once per week. Viewing the bodies comprising our solar system with the aid of a telescope. Assisted by a trained Field Guide.

8. Wildlife oriented educational & team building activities can be provided to Groups & Conferences on request.

At the Lodge

- 2 tennis courts (floodlit)
- Outdoor chess
- 2 swimming pools + kids slide
- Trampolines

- Children's playground
- Bush putt putt
- Table tennis
- Pool table
- Climbing wall

At Sun City

- Valley of the Waves
- Golf
- Squash
- Aquatic sports
- Casino
- Horse riding
- Live entertainment

TRAVELLING INFORMATION

Distances from (approx.)

Johannesburg:	175 km	(2 hours travelling)
Pretoria:	135 km	(1,5 hours travelling)
Sun City:	10 km	(10 min travelling)
Pilanesberg Airport:	15 km	(15 min travelling)

Bus Shuttle Facilities

We offer a shuttle service to and from Sun City at a nominal charge. Please note that Sun City charges an additional entrance fee.

